

Hewlett-Packard to Agilent Technologies Transition

This documentation supports a product that previously shipped under the Hewlett-Packard company brand name. The brand name has now been changed to Agilent Technologies. The two products are functionally identical, only our name has changed. The document still includes references to Hewlett-Packard products, some of which have been transitioned to Agilent Technologies.

Transition de Hewlett-Packard vers Agilent Technologies

La présente documentation se réfère à un produit qui était auparavant livré sous la marque Hewlett-Packard. Cette marque a été remplacée par Agilent Technologies. D'un point de vue fonctionnel, les deux produits sont identiques et seuls leurs noms les différencient. La documentation comprend toujours des références aux produits Hewlett-Packard, même si certains possèdent déjà l'appellation Agilent Technologies.

Umbenennung Hewlett-Packard in Agilent Technologies

Diese Dokumentation gehört zu einem Produkt, das früher unter dem Markennamen Hewlett-Packard ausgeliefert wurde. Der Markenname lautet in der Zwischenzeit Agilent Technologies. Die Funktionalität der beiden Produkte ist identisch, nur der Name hat sich geändert. Im Dokument wird zum Teil immer noch auf Hewlett-Packard verwiesen. An anderer Stelle wurde die Marke in Agilent Technologies umbenannt.

Hewlett-Packard e la transizione ad Agilent Technologies

La presente documentazione è fornita a supporto di un prodotto che in precedenza veniva commercializzato con il marchio Hewlett-Packard. Tale marchio è stato trasformato in Agilent Technologies. I due prodotti sono identici dal punto di vista funzionale; il cambiamento ha riguardato soltanto il nome della società. Nella documentazione sono ancora presenti riferimenti ai prodotti Hewlett-Packard, alcuni dei quali tuttavia sono passati sotto il marchio Agilent Technologies.

Transición de Hewlett-Packard a Agilent Technologies

Esta documentación proporciona información técnica sobre un producto que anteriormente se distribuía bajo el nombre de marca de la compañía Hewlett-Packard. Dicho nombre de marca ha cambiado ahora a Agilent Technologies. Los dos productos son funcionalmente idénticos, sólo ha cambiado nuestro nombre. Este documento aún incluye referencias a productos de Hewlett-Packard, algunos de los cuales han pasado a Agilent Technologies.

Изменение торговой марки Hewlett-Packard на Agilent Technologies

Эта документация относится к продукту, который ранее поставлялся под торговой маркой Hewlett-Packard. Теперь торговая марка изменена на Agilent Technologies, при этом функциональные возможности продукта не изменились. В документе могут встречаться ссылки на продукты Hewlett-Packard, однако некоторые из них теперь являются продуктами Agilent Technologies.

Hewlett-Packard가 Agilent Technologies로 변경되었습니다.

본 설명서의 내용은 Hewlett-Packard 회사 이름으로 출시된 기존의 제품에도 적용됩니다. 상표명이 Agilent Technologies로 변경되었습니다. 제품명만 변경된 것일뿐 기능적인 면에서는 이전과 동일합니다. 설명서에는 Hewlett-Packard 제품에 적용되는 참조사항이 포함되어 있으며, 일부 제품명은 Agilent Technologies로 변경되어 있습니다.

Hewlett-PackardからAgilent Technologiesへの移行

この文書は、以前にHewlett-Packardの商標名で出荷された製品をサポートするものです。その商標名は現在、Agilent Technologiesに変更されています。2つの商標の製品は機能的に同じですが、当社の商標のみが変更されました。この文書にはHewlett-Packard製品に関する参照事項がまだ含まれていますが、その一部はAgilent Technologiesに移行されています。

关于惠普公司更名为安捷伦科技公司的事宜

此文档支持先前以惠普公司 (Hewlett-Packard) 商标名称交付的产品。此商标名称现已更名为安捷伦科技公司 (Agilent Technologies)。两个商标名称的产品在功能上完全相同，只是更改了名称。文档中仍然会提到惠普产品，但其中一些产品名称已改为安捷伦科技公司。

關於惠普公司更名爲安捷倫科技事宜

本資料支持先前以惠普公司 (Hewlett-Packard) 品牌交付的產品，而該品牌現已改名爲安捷倫科技 (Agilent Technologies)。兩個品牌的產品功能相同，僅名稱更換而已。本資料仍含有惠普公司產品參數，但其中的一些產品名稱已改爲安捷倫科技。

Operation and Service Guide

HP E4412A and HP E4413A

Power Sensors



HP Part No. E4412-90013

Printed in USA
June 1999

© Copyright 1999 Hewlett-Packard Company

Legal

The information contained in this document is subject to change without notice. Hewlett-Packard makes no warranty of any kind with regard to this material, including but not limited to, the implied warranties of merchantability and fitness for a particular purpose. Hewlett-Packard shall not be liable for errors contained herein or for incidental or consequential damages in connection with the furnishing, performance, or use of this material.

Safety Information

WARNING:

Warning denotes a hazard. It calls attention to a procedure which, if not correctly performed or adhered to, could result in injury or loss of life. Do not proceed beyond a warning note until the indicated conditions are fully understood and met.

CAUTION:

Caution denotes a hazard. It calls attention to a procedure that, if not correctly performed or adhered to, would result in damage to or destruction of the instrument. Do not proceed beyond a caution sign until the indicated conditions are fully understood and met.

CAUTION:

This product is designed for use in Installation Category II and Pollution Degree 2.

This instrument has been designed and tested in accordance with IEC Publication 348, Safety Requirements for Electronic Measuring Apparatus, and has been supplied in a safe condition. The instruction documentation contains information and warnings which must be followed by the user to ensure safe operation and to maintain the instrument in a safe condition.

“CSA” The CSA mark is a registered trademark of the Canadian Standards Association.

Notice for Germany: Noise Declaration LpA < 70 dB am Arbeitsplatz (operator position) normaler Betrieb (normal position) nach DIN 45635 T. 19 (per ISO 7779).

Operation and Service Guide



ss71a

Figure 1

HP E4412A and HP E4413A Power Sensors (Formerly HP ECP-E18A and HP ECP-E26A, Respectively)

General Information

This operation and service guide contains information about initial inspection, operation, performance tests, troubleshooting and repair of the HP E4412A and HP E4413A power sensors.

Warranty

The power sensors are warranted and certified as indicated on the inside cover of this manual.

Instruments Covered by Manual

These instruments have a two-part serial number: the prefix (two letters and the first four numbers), and the suffix (the last four numbers). The two letters identify the country in which the unit was manufactured. The four numbers of the prefix are a code identifying the date of the last major design change incorporated in your Hewlett-Packard product. The four-digit suffix is a sequential number and, coupled with the prefix, provides a unique identification for each unit produced. The contents of this manual apply directly to all serial numbers unless otherwise indicated

Description

The HP E4412A and HP E4413A power sensors are diode power sensors. They are intended for measurement of CW microwave power levels in a wide dynamic range from -70 dBm to $+20$ dBm (100 pW to 100 mW). The HP E4412A measures at frequencies from 10 MHz to 18.0 GHz. The HP E4413A measures at frequencies from 50 MHz to 26.5 GHz. These are high-speed power sensors, and do not incorporate narrow-bandwidth averaging used in average-power sensors. Signals with digital, pulse, or other forms of amplitude modulation may introduce measurement errors. Multi-tone signals (containing multiple frequency components), or signals with significant harmonic content (> -45 dBc) may introduce measurement errors at high power levels. (Specifications for the power sensors are in Table 1.)

These power sensors measure CW power, displayed on a compatible power meter in logarithmic (dBm or dB) or linear (Watts or %) measurement units. The HP E4413A is shipped with a 3.5-mm to Type-N adapter, HP part number 08485-60005.

NOTE:

The HP E4412A and HP E4413A power sensors are compatible ONLY with the newer HP E44XX-Series power meters. They are NOT compatible with the earlier HP 430-Series, HP E1416A, or HP 70100A power meters.

CAUTION:

The HP E4412A and HP E4413A power sensors are extremely static-sensitive. Do not open the power sensor unless you and the power sensor are at a static-free workstation.

Specifications

The specifications listed in Table 1 are the performance standards or limits against which the power sensor may be tested. These specifications are valid ONLY after proper calibration of the power meter. Refer to the *Calibration Procedure Using HP E-Series Power Sensors* in the HP E4418A or the *HP E4419A Power Meter User's Guide*.

Table 1 HP E4412A and HP E4413A Specifications

| | Limits | Comments |
|---|--|-------------------------|
| Frequency Range | E4412A: 10 MHz to 18 GHz E4413A: 50 MHz to 26.5 GHz | |
| Power Range | -70 dBm to +20 dBm (100 pW to 100 mW) | |
| Impedance | 50 ohm | nominal |
| Connector Type | E4412A: Type-N (male) E4413A: 3.5-mm (male) | |
| Maximum Standing Wave Ratio (SWR) and Reflection Coefficient (Rho)^b | SWR Rho | Return Loss (dB) |
| E4412A | | |
| 10 MHz to <30 MHz | 1.22 0.099 | 20.08 |
| 30 MHz to <2 GHz | 1.15 0.070 | 23.13 |
| 2 GHz to <6 GHz | 1.17 0.078 | 22.12 |
| 6 GHz to <11 GHz | 1.20 0.091 | 20.82 |
| 11 GHz to <18 GHz | 1.27 0.119 | 18.42 |
| E4413A | | |
| 50 MHz to <100 MHz | 1.21 0.095 | 20.45 |
| 100 MHz to <8 GHz | 1.19 0.087 | 21.23 |
| 8 GHz to <18 GHz | 1.21 0.095 | 20.45 |
| 18 GHz to 26.5 GHz | 1.26 0.115 | 18.79 |
| Maximum Power | 200 mW peak (+23 dBm) 200 mW average (+23 dBm) | |
| Zero Set | ±50 pW | |

Table 1 HP E4412A and HP E4413A Specifications

| | Limits | | Comments |
|-------------------------------------|--------------------------------|------------------|--|
| Power Linearity^{ab} | 25 ± 5°C | 0 to 55°C | (After calibration at 0 dBm at ambient temperature) |
| 100 pW to 10 mW | ±3% | ±7% | -70 dBm to +10 dBm |
| 10 mW to 100 mW | ±4.5% | ±10% | +10 dBm to +20 dBm |
| Operating Temperature | 0 to 55°C | | |
| Net Weight | | | |
| HP E4412A | 0.47 kg (1.04 lb) | | |
| HP E4413A | 0.45 kg (1.00 lb) | | |
| Dimensions | | | |
| HP E4412A | Length: 130 mm (5.1 in) | | Same for both models Same for both models |
| HP E4413A | Length: 102 mm (4.0 in) | | |
| | Width: 38 mm (1.5 in) | | |
| | Height: 30 mm (1.2 in) | | |

- a. Limits are in percent of power in Watts. See Figure 2 for relative power measurement.
- b. Specifications apply to instruments with serial prefix US3848 and above. For earlier instruments, refer to Appendix A.

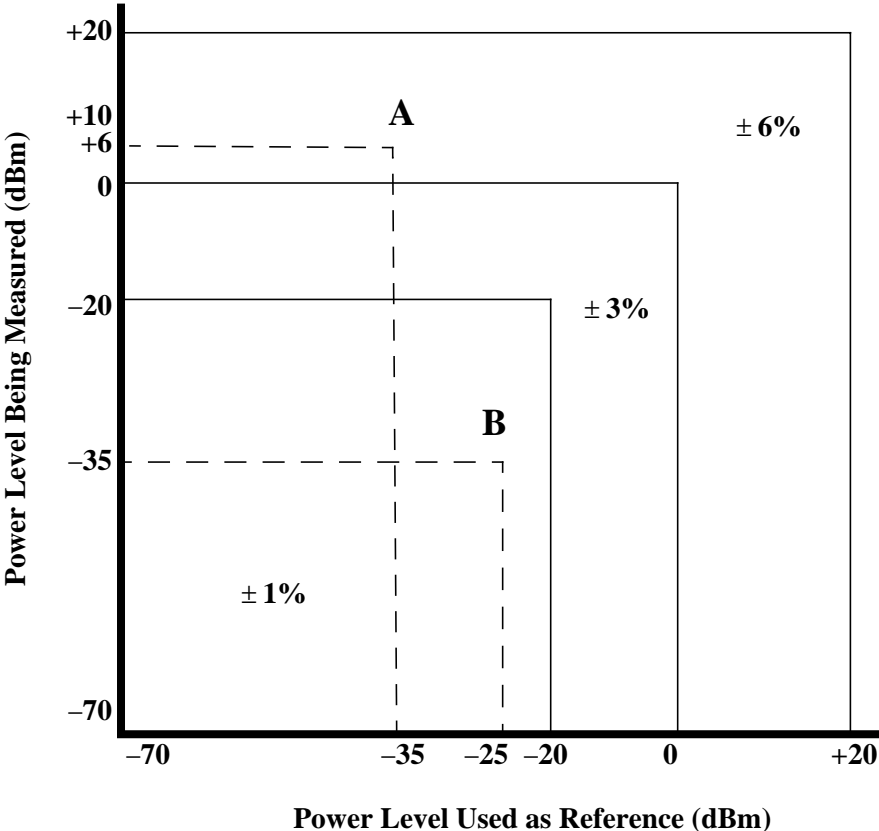


Figure 2

**Relative Mode Power Measurement Linearity
with Power Meter/Sensor at 25° C (Typical)**

The chart in Figure 2 shows the typical uncertainty in making a relative power measurement with the HP E44XX-Series power meter in the Rel (relative) mode. In a relative measurement, two power levels are compared using a single sensor. The typical measurement uncertainty can be found by drawing a vertical line at the power level used as a reference, and a horizontal line at the power being measured. The region where these two lines intersect shows the typical uncertainty. This assumes that the reference power and the measured power are at the same frequency, and neglects errors due to zero set, zero drift, and noise. It also assumes no change in mismatch when

measuring the “Power level used as reference” and the “Power level being measured.” This chart illustrates that the best relative power measurement accuracy is obtained when the reference and the measured power levels are equal to, or less than, -20 dBm. Care in choosing the power levels can yield improved measurement accuracy. Example A illustrates a relative gain (amplifier measurement) and example B illustrates a relative loss (insertion loss measurement).

EXAMPLE A (Amplifier Gain Measurement):

Input power (reference) = -35 dBm; power measured = $+6$ dBm, so the relative gain is $+41$ dB. The chart indicates a typical error of $\pm 6\%$, which corresponds to $+0.25$ dB/ -0.27 dB uncertainty in the gain measurement.

EXAMPLE B (Insertion Loss Measurement):

Reference power = -25 dBm; power measured = -35 dBm, for the case of an insertion loss of 10 dB. The chart indicates a typical error of $\pm 1\%$, which corresponds to ± 0.04 dB uncertainty in the measurement.

Calibration Factor (CF) and Reflection Coefficient (Rho)

Calibration factor and reflection coefficient data are given at 1 GHz increments on a data sheet included with the power sensor. This data is unique to each sensor. If you have more than one sensor, match the serial number on the data sheet with the serial number on the power sensor you are using. The CF corrects for the frequency response of the sensor. The power meter automatically reads the CF data stored in the sensor and uses it to make the corrections.

Reflection Coefficient (Rho, or ρ) relates to SWR according to the following formula:

$$\text{SWR} = (1+\rho)/(1-\rho)$$

Maximum uncertainties of the CF data are listed in Table 2 for the HP E4412A power sensor, and in Table 3 for the HP E4413A power sensor. The uncertainty analysis for the calibration of the sensors was done in accordance with the ISO/TAG4 Guide. The uncertainty data reported on the calibration certificate is the expanded uncertainty with 95% confidence level and a coverage factor of 2 .

Additionally, at frequencies other than the reference frequency, for measurements above 0 dBm include 0.5%/dB high power calibration factor uncertainty.

Table 2

HP E4412A Calibration Factor Uncertainty at 1mW (0 dBm)

| Frequency | Uncertainty (%) ^a |
|-----------|------------------------------|
| 10 MHz | 1.8 |
| 30 MHz | 1.8 |
| 50 MHz | Reference |
| 100 MHz | 1.8 |
| 1.0 GHz | 1.8 |
| 2.0 GHz | 2.4 |
| 4.0 GHz | 2.4 |
| 6.0 GHz | 2.4 |
| 8.0 GHz | 2.4 |
| 10.0 GHz | 2.4 |
| 11.0 GHz | 2.4 |
| 12.0 GHz | 2.4 |
| 14.0 GHz | 2.4 |
| 16.0 GHz | 2.6 |
| 18.0 GHz | 2.6 |

a. Specifications apply to instruments with serial prefix US3848 and above. For earlier instruments, refer to Appendix A.

Table 3 HP E4413A Calibration Factor Uncertainty at 1mW (0 dBm)

| Frequency | Uncertainty (%) ^a |
|-----------|------------------------------|
| 50 MHz | Reference |
| 100 MHz | 1.8 |
| 1.0 GHz | 1.8 |
| 2.0 GHz | 2.4 |
| 4.0 GHz | 2.4 |
| 6.0 GHz | 2.4 |
| 8.0 GHz | 2.4 |
| 10.0 GHz | 2.6 |
| 12.0 GHz | 2.8 |
| 14.0 GHz | 2.8 |
| 16.0 GHz | 2.8 |
| 17.0 GHz | 2.8 |
| 18.0 GHz | 2.8 |
| 19.0 GHz | 3.0 |
| 20.0 GHz | 3.0 |
| 22.0 GHz | 3.0 |
| 24.0 GHz | 3.0 |
| 26.0 GHz | 3.0 |
| 26.5 GHz | 3.0 |

a. Specifications apply to instruments with serial prefix US3848 and above. For earlier instruments, refer to Appendix A.

Installation

Initial Inspection

Inspect the shipping container for damage. If the shipping container or packaging material is damaged, it should be kept until the contents of the shipment have been checked mechanically and electrically. If there is mechanical damage or if the instrument does not pass the performance tests, notify the nearest Hewlett-Packard office. Keep the damaged shipping materials (if any) for inspection by the carrier and a Hewlett-Packard representative.

Interconnections

Connect one end of the HP 11730A sensor cable to the HP E4412A or HP E4413A power sensor and connect the other end of the cable to the power meter's channel input. Allow a few seconds for the power meter to download the power sensor's calibration table before making a measurement.

Measurement connector (connects to DUT)

HP E4412A: Type-N (male)

HP E4413A: 3.5-mm (male)

A torque wrench should be used to tighten these connectors. Use a 3/4-inch open-end wrench and torque to 12 in-lb (135 Ncm) for the Type-N connector. Use a 20-mm open-end wrench and torque to 8 in-lb (90 Ncm) for the 3.5-mm connector.

Storage and Shipment

Environment

The instruments should be stored in a clean, dry environment. The following limitations apply to both storage and shipment:

| | |
|--------------------------|-------------------------------|
| Temperature | -55 to +75°C |
| Relative humidity | < 95% at 40°C |
| Altitude | < 15,240 metres (50,000 feet) |

Original Packaging

Containers and materials identical to those used in factory packaging are available through Hewlett-Packard offices. If the instrument is being returned to Hewlett-Packard for servicing, attach a tag indicating the type of service required, return address, model number, and serial number. Also, mark the container FRAGILE to assure careful handling. In any correspondence, refer to the instrument by model number and serial number.

Operation

Operating Environment

The operating environment for the power sensor should be within the following limits:

| | |
|--------------------------|-----------------------------|
| Temperature | 0° to 55°C |
| Relative humidity | < 95% |
| Altitude | < 4530 metres (15,000 feet) |

Operating Precautions

WARNING:

BEFORE CONNECTING THE POWER SENSOR TO OTHER INSTRUMENTS, ensure that all instruments are connected to the protective (earth) ground. Any interruption of the protective earth grounding will cause a potential shock hazard that could result in personal injury and cause damage to the power sensor.

If the following energy and power levels are exceeded, the power meter system may be damaged.

- a Maximum Average Power: 200 mW (+23 dBm)
- b Maximum Peak Power: 200 mW (+23 dBm)

Maximum torque at the connector should not exceed 12 in-lb (135 Ncm) for the Type-N connector, or 8 in-lb (90 Ncm) for the 3.5-mm connector to avoid damage to the connector.

Connect the power sensor by turning only the hex nut portion of the connector. Damage can occur if torque is applied to the power sensor body.

The connector plastic insulator bead deteriorates when contacted by acetone, trichloroethylene, carbon tetrachloride, benzene, etc. Refer to HP Application Note 326, Principles of Microwave Connector Care (5954-1566) or Microwave Connector Care (08510-90064) for proper cleaning methods.

Power Meter Calibrations

Follow the calibration procedures given in your power meter manual.

Operating Instructions

The HP E4412A and HP E4413A power sensors are compatible **ONLY** with the newer HP E44XX-Series power meters. They are **NOT** compatible with the earlier HP 430-Series, HP E1416A, or HP 70100A power meters. To operate the power sensor, refer to the operating instructions in the *HP E44XX-Series Power Meter User's Guide*.

Performance Test

Standing Wave Ratio (SWR) and Reflection Coefficient (Rho) Performance Test

This section does not establish preset SWR test procedures since there are several test methods and different equipment available for testing the SWR or reflection coefficient. Therefore, the actual accuracy of the test equipment must be accounted for when measuring against instrument specifications to determine a pass or fail condition. The test system used must not exceed the system Rho uncertainties shown in Table 4 when testing the HP E4412A, or in Table 5 when testing the HP E4413A.

Table 4

Power Sensor SWR and Reflection Coefficient for the HP E4412A^a

| Frequency | System Rho Uncertainty | Actual Measurement | Maximum Rho |
|-------------------|------------------------|--------------------|-------------|
| 10 MHz to <30 MHz | ±0.010 | | 0.099 |
| 30 MHz to <2 GHz | ±0.010 | | 0.070 |
| 2 GHz to <6 GHz | ±0.010 | | 0.078 |
| 6 GHz to <11 GHz | ±0.010 | | 0.091 |
| 11 GHz to 18 GHz | ±0.010 | | 0.119 |

a.Specifications apply to instruments with serial prefix US3848 and above. For earlier instruments, refer to Appendix A.

Table 5

Power Sensor SWR and Reflection Coefficient for the HP E4413A^a

| Frequency | System Rho Uncertainty | Actual Measurement | Maximum Rho |
|--------------------|-----------------------------------|-------------------------------|------------------------|
| 50 MHz to <100 MHz | ±0.010 | | 0.095 |
| 100 MHz to <8 GHz | ±0.010 | | 0.087 |
| 8 GHz to <18 GHz | ±0.010 | | 0.095 |
| 18 GHz to 26.5 GHz | ±0.015 | | 0.115 |

a. Specifications apply to instruments with serial prefix US3848 and above. For earlier instruments, refer to Appendix A.

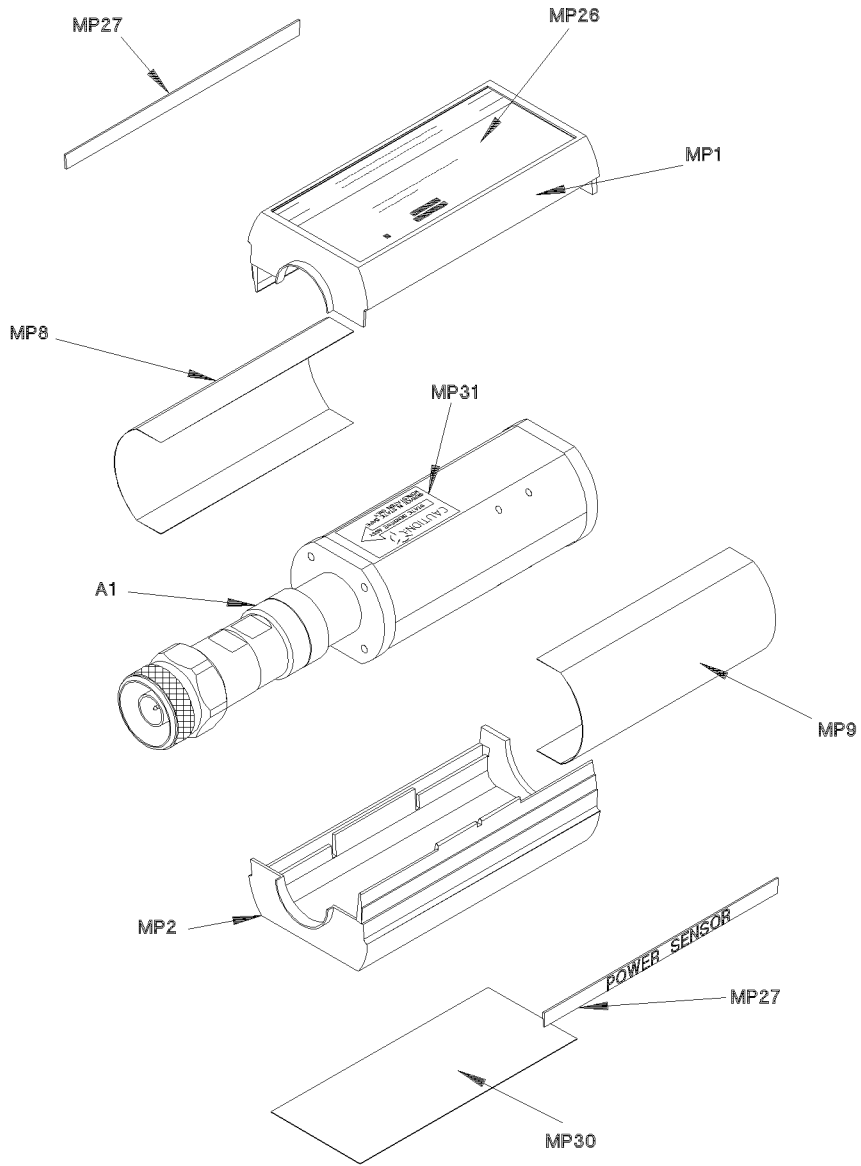
Replaceable Parts

Table 6 is a list of replaceable parts. Figure 3 is the illustrated parts breakdown (IPB) that identifies all of the replaceable parts. To order a part, quote the Hewlett-Packard part number, specify the quantity required, and address the order to the nearest Hewlett-Packard office.

NOTE:

Within the USA, it is better to order directly from the HP Parts Center in Roseville, California. Ask your nearest HP office for information and forms for the “Direct Mail Order System.” Also your nearest HP office can supply toll free telephone numbers for ordering parts and supplies.

Operation and Service Guide
Replaceable Parts



ss72a

Figure 3

Illustrated Parts Break down

Table 6 **Replaceable Parts**

| Reference Designation | HP Part Number | Qty | Description |
|------------------------------|-----------------------|------------|---------------------------------|
| A1/A2 E4412A | E4412-60006 | 1 | SENSOR MODULE (E4412A) |
| A1/A2 E4412A | E4412-69006 | 1 | RESTORED SENSOR MODULE (E4412A) |
| A1/A2 E4413A | E4413-60003 | 1 | SENSOR MODULE (E4413A) |
| A1/A2 E4413A | E4413-69003 | 1 | RESTORED SENSOR MODULE (E4413A) |
| | 08485-60005 | 1 | ADAPTOR, 3.5-mm to Type-N |
| | | | CHASSIS PARTS |
| MP1 | 5041-9160 | 2 | SHELL-PLASTIC |
| MP2 | 5041-9160 | | SHELL-PLASTIC |
| MP3 | 08481-20011 | 2 | CHASSIS |
| MP4 | 08481-20011 | | CHASSIS |
| MP8 | 08481-00002 | 2 | SHIELD |
| MP9 | 08481-00002 | | SHIELD |
| MP26 | E4412-80002 | 1 | LABEL, ID HP E4412A |
| MP26 | E4413-80003 | 1 | LABEL, ID HP E4413A |
| MP27 | 7121-7389 | 2 | LABEL, POWER SENSOR |
| MP30 | 7121-7388 | 1 | LABEL, CAL/ESD |
| MP31 | 00346-80011 | 1 | LABEL, CAUTION |

Service

Service instructions consist of principles of operation, troubleshooting, and repairs.

Principles of Operation

The A1 Bulkhead assembly provides a 50 ohm load to the RF signal applied to the power sensor. A diode assembly in the bulkhead rectifies the applied RF to produce a dc voltage which varies with the RF power across the 50 ohm load. Thus the voltage varies with the RF power dissipated in the load. With maximum specified RF power (100 mW) the dc voltage is approximately 1V.

The low-level dc voltage from the bulkhead assembly must be amplified before it can be transferred on standard cables to the power meter. The amplification is provided by an input amplifier assembly which consists of a chopper (sampling gate) and an input amplifier. The chopper circuit converts the dc voltage to an ac voltage. To do this, the chopper uses two field effect transistors (FETs), A2Q1 and A2Q2, controlled by a 440 Hz square wave generated by the power meter. The amplitude of the sampling gate output (drain of A2Q1, source of A2Q2) is a 440 Hz square wave which varies with the RF power input. The 440 Hz ac output is applied to the input amplifier A2Q3 which provides the input to the first amplifier stage in the power meter.

The HP E44XX-Series power meter automatically detects when an HP E44XX-Series power sensor is connected and downloads the correction data from the sensor's EEPROM. This configures the power meter to operate over the +20 dBm to -70 dBm power range with that particular sensor's unique correction data applied.

Troubleshooting

Troubleshooting information is intended to first isolate the power sensor, the cable, or the power meter as the defective component. When the power sensor is isolated, a "Restored Sensor Module" must be used for repair. See Table 6.

If error message **241** or **310** is indicated on the power meter, suspect a failed power sensor. If no error message is displayed, but a problem occurs when making a measurement, try replacing the cable from the power meter to the power sensor. If the problem still exists, try using a different power sensor to determine if the problem is in the power meter or in the power sensor.

CAUTION:

Electrostatic discharge will render the power sensor inoperative. Do not, under any circumstances, open the power sensor unless you and the power sensor are in a static free environment.

Repair of Defective Sensor

There are no serviceable parts inside the HP E44XX-Series sensors. If the sensor is defective, replace the entire “module” with the appropriate “Restored Sensor Module.” See Table 6.

Cleaning

Cleaning Solutions

Keeping in mind its flammable nature; a solution of pure isopropyl or ethyl alcohol can be used to clean the connector.

Connector Cleaning

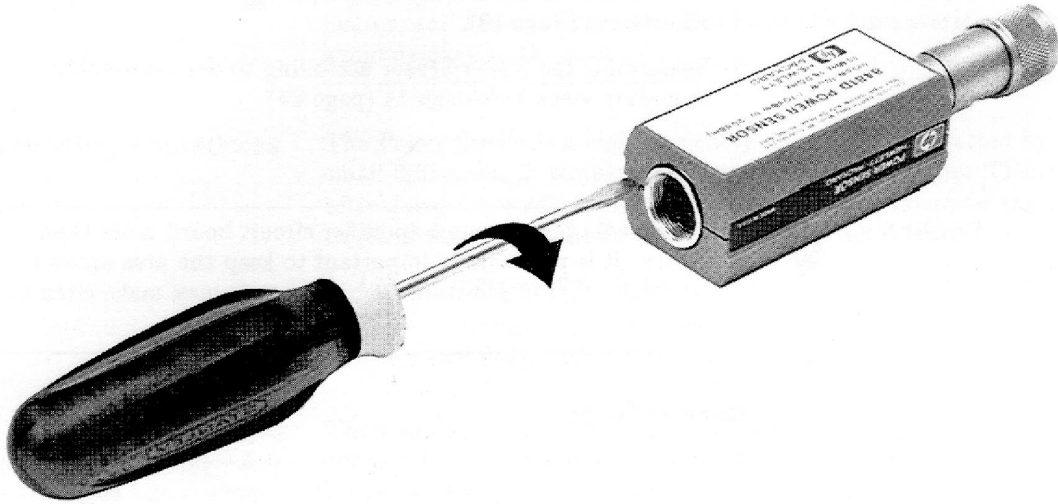
CAUTION:

The RF connector beads deteriorate when contacted by hydrocarbon compounds such as acetone, trichloroethylene, carbon tetrachloride, and benzene.

CAUTION:

Clean the connector only at a static free workstation. Electrostatic discharge to the center pin of the connector will render the power sensor inoperative.

Clean the connector face using a cotton swab dipped in isopropyl alcohol. If the swab is too big use a round wooden toothpick wrapped in a lint free cotton cloth dipped in isopropyl alcohol. Refer to HP Application Note 326, Principals of Microwave Connector Care (5954-1566) or Microwave Connector Care (08510-90064) for proper cleaning methods.



ss75a

Figure 4

Removing Power Sensor Shell

Disassembly Procedure

Disassemble the power sensor by performing the following steps:

CAUTION:

Disassemble the power sensor only in a static free workstation. Electrostatic discharge will render the power sensor inoperative.

- 1 At the rear of the power sensor, insert the blade of a screwdriver between the plastic shells (Figure 4). To prevent damage to the plastic shells use a screwdriver blade as wide as the slot between the two shells.
- 2 Pry alternately at both sides of the connector J1 until the plastic shells are apart. Remove the shells and the magnetic shields.

Reassembly Procedure

- 1 Replace the magnetic shields and the plastic shells as shown in Figure 3. Snap the plastic shells together.

Sales and Service Offices

Table 7 Hewlett-Packard Sales and Service Offices

| UNITED STATES | | |
|--|--|--|
| Instrument Support Center Hewlett-Packard Company (800) 403-0801 | | |
| EUROPEAN FIELD OPERATIONS | | |
| Headquarters Hewlett-Packard S.A. 150, Route du Nant-d'Avril 1217 Meyrin 2/ Geneva Switzerland (41 22) 780.8111 | France Hewlett-Packard France 1 Avenue Du Canada Zone D'Activite De Courtaboeuf F-91947 Les Ulis Cedex France (33 1) 69 82 60 60 | Germany Hewlett-Packard GmbH Hewlett-Packard Strasse 61352 Bad Homburg v.d.H Germany (49 6172) 16-0 |
| Great Britain Hewlett-Packard Ltd. Eskdale Road, Winnersh Triangle Wokingham, Berkshire RG41 5DZ England (44 118) 9696622 | | |

Table 7 Hewlett-Packard Sales and Service Offices

| INTERCON FIELD OPERATIONS | | |
|--|---|--|
| Headquarters Hewlett-Packard Company 3495 Deer Creek Rd. Palo Alto, CA 94304-1316 USA (415) 857-5027 | Australia Hewlett-Packard Australia Ltd. 31-41 Joseph Street Blackburn, Victoria 3130 (61 3) 895-2895 | Canada Hewlett-Packard (Canada) Ltd. 17500 South Service Road Trans-Canada Highway Kirkland, Quebec H9J 2X8 Canada (514) 697-4232 |
| Japan Hewlett-Packard Japan, Ltd. 9-1 Takakura-Cho, Hachioji Tokyo 192, Japan (81 426) 60-2111 | Singapore Hewlett-Packard Singapore (Pte.) Ltd. 150 Beach Road #29-00 Gateway West Singapore 0718 (65) 291-9088 | Taiwan Hewlett-Packard Taiwan 8th Floor, H-P Building 337 Fu Hsing North Road Taipei, Taiwan (886 2) 712-0404 |
| China China Hewlett-Packard Co. 38 Bei San Huan X1 Road Shuang Yu Shu Hai Dian District Beijing, China (86 1) 256-6888 | | |

Appendix

The following specifications apply to HP E4412A and HP E4413A sensors (formerly HP ECP-E18A and HP ECP-E26A, respectively) with a serial prefix below US3848.

Table 8 HP E4412A and HP E4413A Specifications (Serial Prefixes Below US3848)

| | Limits | Comments |
|---|--|-------------------------|
| Frequency Range | E4412A: 10 MHz to 18 GHz E4413A: 50 MHz to 26.5 GHz | |
| Power Range | -70 dBm to +20 dBm (100 pW to 100 mW) | |
| Impedance | 50 ohm | nominal |
| Connector Type | E4412A: Type-N (male) E4413A: 3.5-mm (male) | |
| Maximum Standing Wave Ratio (SWR) and Reflection Coefficient (Rho) | SWR Rho | Return Loss (dB) |
| E4412A | | |
| 10 MHz to 30 MHz | 1.34 0.145 | 16.8 |
| 30 MHz to 10 GHz | 1.22 0.100 | 20.0 |
| 10 GHz to 18 GHz | 1.27 0.120 | 18.4 |
| E4413A | | |
| 50 MHz to 2 GHz | 1.25 0.110 | 19.2 |
| 2 GHz to 18 GHz | 1.21 0.095 | 20.5 |
| 18 GHz to 26.5 GHz | 1.26 0.115 | 18.8 |
| Maximum Power | 200 mW peak (+23 dBm) 200 mW average (+23 dBm) | |
| Zero Set | ±50 pW | |

Table 8 HP E4412A and HP E4413A Specifications (Serial Prefixes Below US3848)

| | Limits | | Comments |
|------------------------------------|--------------------------------|------------------|---|
| Power Linearity^a | 25 ± 5°C | 0 to 55°C | (After calibration at 0 dBm at ambient temperature) |
| 100 pW to 10 mW | ±4% | ±8% | -70 dBm to +10 dBm |
| 10 mW to 100 mW | ±5.5% | ±11% | +10 dBm to +20 dBm |
| Operating Temperature | 0 to 55°C | | |
| Net Weight | | | |
| HP E4412A | 0.47 kg (1.04 lb) | | |
| HP E4413A | 0.45 kg (1.00 lb) | | |
| Dimensions | | | |
| HP E4412A | Length: 130 mm (5.1 in) | | Same for both models Same for both models |
| HP E4413A | Length: 102 mm (4.0 in) | | |
| | Width: 38 mm (1.5 in) | | |
| | Height: 30 mm (1.2 in) | | |

a. Limits are in percent of power in Watts. See Figure 2 for relative power measurement.

Table 9

**HP E4412A Calibration Factor Uncertainty at 1mW (0 dBm)
(Serial Prefixes Below US3848)**

| Frequency | Uncertainty |
|------------------|--------------------|
| 10 MHz | 2.7% |
| 30 MHz | 2.7% |
| 50 MHz | Reference |
| 100 MHz | 2.7% |
| 1.0 GHz | 2.7% |
| 2.0 GHz | 3.1% |
| 4.0 GHz | 3.1% |
| 6.0 GHz | 3.1% |
| 8.0 GHz | 3.1% |
| 10.0 GHz | 3.1% |
| 11.0 GHz | 3.1% |
| 12.0 GHz | 3.3% |
| 14.0 GHz | 3.3% |
| 16.0 GHz | 3.3% |
| 18.0 GHz | 3.3% |

Table 10 **HP E4413A Calibration Factor Uncertainty at 1mW (0 dBm)**
(Serial Prefixes Below US3848)

| Frequency | Uncertainty |
|------------------|--------------------|
| 50 MHz | Reference |
| 100 MHz | 2.7% |
| 1.0 GHz | 2.7% |
| 2.0 GHz | 3.1% |
| 4.0 GHz | 3.1% |
| 6.0 GHz | 3.1% |
| 8.0 GHz | 3.1% |
| 10.0 GHz | 3.1% |
| 12.0 GHz | 3.3% |
| 14.0 GHz | 3.3% |
| 16.0 GHz | 3.3% |
| 17.0 GHz | 3.3% |
| 18.0 GHz | 3.5% |
| 20.0 GHz | 3.5% |
| 22.0 GHz | 3.5% |
| 24.0 GHz | 3.5% |
| 26.0 GHz | 3.5% |
| 26.5 GHz | 3.5% |